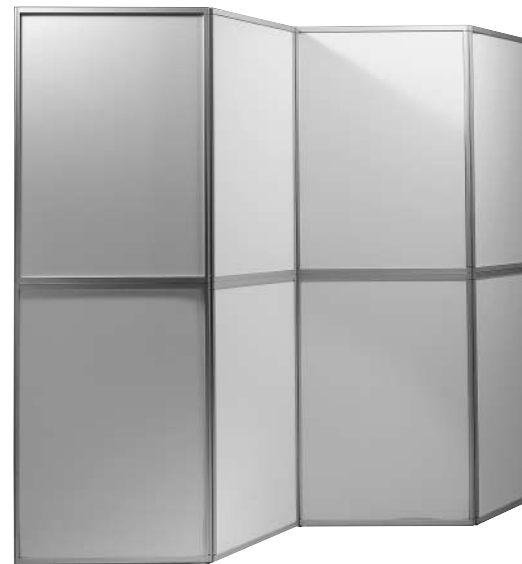




# EUROframe

---

instruction manual



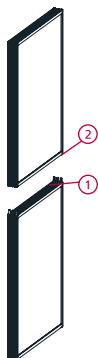
[www.eurostand.com](http://www.eurostand.com)

[p]art of perfect presentation

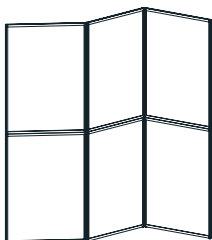
# EUROframe



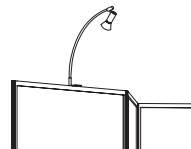
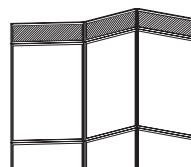
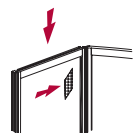
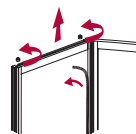
Remove both parts of the structure from the packaging.



Place the folded part no. 1 of the structure on the floor, so that the rubber feet are on the floor. Place part no. 2 onto part no. 1.



You can open the structure into the required shape.



**To change the graphic panels please use the attached service set.**

Loosen the screws on the horizontal pro-file and exchange the panels. Reconnect the horizontal profile by tightening the two screws and also use the steels tongues to affix the panel in place.

Note 1:

If you wish to use a logo, please attach the logo first to part no. 2 and then follow the above instructions to attach part no. 2 with the logo to part no. 1.

Note 2:

If you wish to use lights, use connector to attach them to the top horizontal profile.

**Graphic panels can be cleaned using water and detergent; laminated panels can also be cleaned with an alcohol-based cleaner.**

Transport bag for EUROframe.